

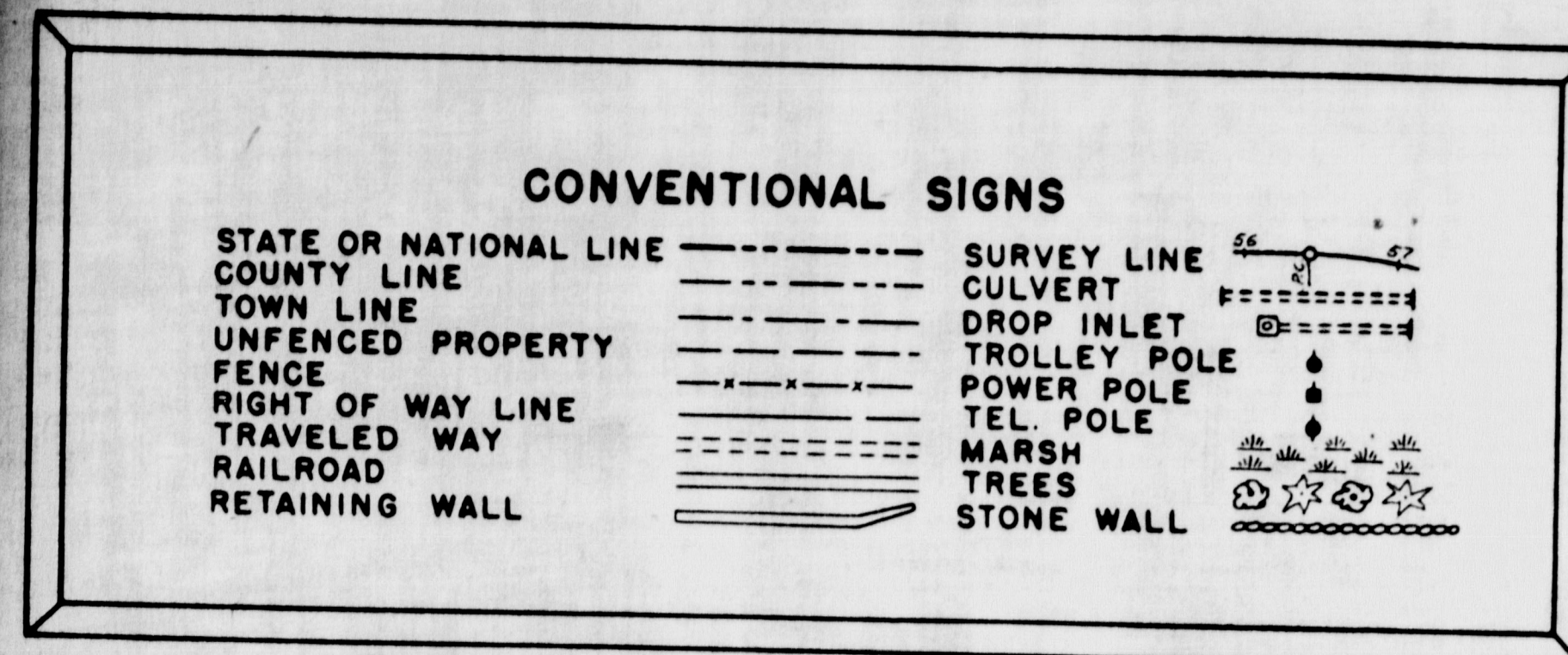
# STATE OF MAINE STATE HIGHWAY COMMISSION

B. P. R. REG. NO.	STATE	FED. AID PROJ. NO.	SHEET NO.	TOTAL SHEETS
1	MAINE	1-295-3(6)55	1	50

FALMOUTH

## PLAN AND PROFILE STATE HIGHWAY "295" FALMOUTH

CUMBERLAND COUNTY  
FEDERAL AID PROJECT NO. 1-295-3(6) 55  
INTERSTATE STA. 212+00 TO STA. 227+00 & RAMP 1, 1A, 2 & 2A  
GRADING, DRAINAGE & BASE  
RELOCATED DEPOT ROAD GRADING, DRAINAGE & PAVING  
INCLUDING DEPOT ROAD BRIDGE  
TOTAL LENGTH 0.284 MILES



**INDEX OF SHEETS**

SHEET NO.	TITLE PAGE
SHEET NO. 1	TYPICAL SECTIONS
SHEET NO. 2 & 3	QUANTITIES
SHEET NO. 4 & 5	STANDARD DETAILS
SHEET NO. 6 - 10	PLAN AND PROFILE
SHEET NO. 12 - 20	CROSS SECTIONS
SHEET NO. 31 - 50	BRIDGE
SHEET NO. 22 - 29	SPECIAL DETAILS
SHEET NO. 11	HIGHWAY BORINGS
SHEET NO. 21	UTILITIES
SHEET NO. 30	

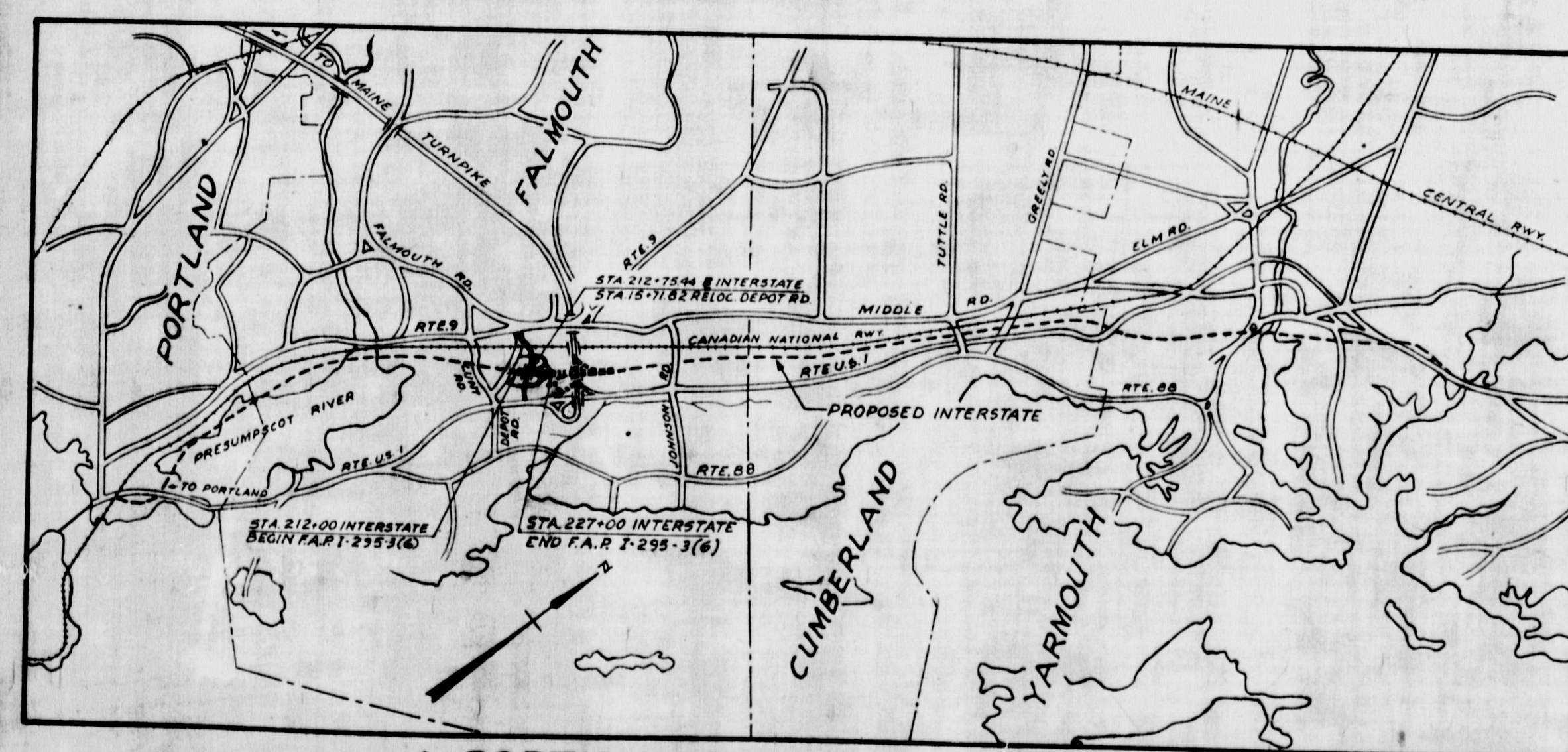
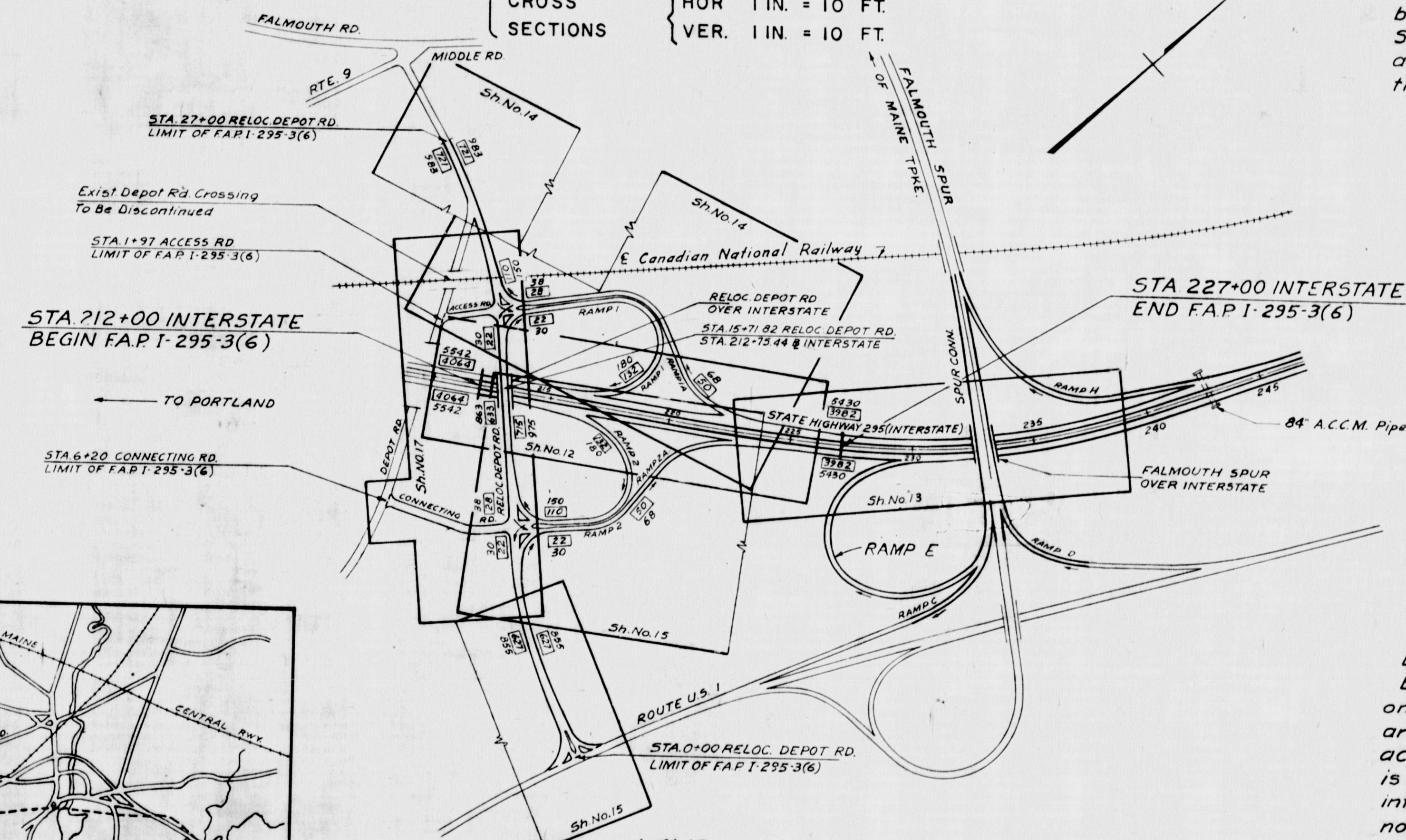
**TRAFFIC DATA**

1960 A.D.T.	7964
1980 A.D.T.	10860
D.H.V.	1629
T.	15%
D.	65%
V.	60 M.P.H.

**SCALES**

PLAN	1 IN. = 50 FT. & 1 IN. = 20 FT.
PROFILE	HOR. 1 IN. = 50 FT. VER. 1 IN. = 5 FT.
CROSS SECTIONS	HOR. 1 IN. = 10 FT. VER. 1 IN. = 10 FT.

All work contemplated under this contract to be governed by and in conformity with the Standard Specifications for Highways and Bridges adopted January 1956, except as modified on the plans and in the special provisions.



A PORTION OF CUMBERLAND COUNTY  
Approximate Scale: 1 Inch = 1 Mile

LAYOUT PLAN  
Scale: 1 Inch = 400 Ft.

PREPARED BY

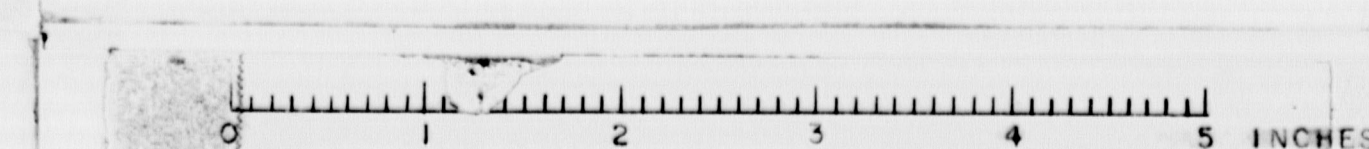
FAY, SPOFFORD & THORNDIKE, INC.  
ENGINEERS BOSTON-PORTLAND

APPROVED:  
MAINE STATE HIGHWAY COMMISSION

*David H. Sturges*  
CHAIRMAN  
*Robert L. Williams*  
CHIEF ENGINEER

DEPARTMENT OF COMMERCE  
BUREAU OF PUBLIC ROADS  
REGION I  
APPROVED:  
DIVISION ENGINEER

DEPOT ROAD M-130C





1. SPECIFICATIONS  
AASHTO 1953  
Maine State Highway Commission, Standard Specifications  
Highway and Bridges 1956 and special Provisions.

2. LIVE LOAD  
H 20-S16-Modified.
3. WIND LOAD  
ASCE 7-10
4. SEISMIC LOAD  
ASCE 7-10
5. FOUNDATION  
Steel H Piles  
Design Capacity - 35 Tons.
6. ALLOWABLE STRESSES  
Structural Steel - 18,000 p.s.i.  
Reinforcing Steel - 18,000 p.s.i.  
Concrete - 1,200 p.s.i.
7. CONCRETE  
Class A'-Footings, Piers, Abutments, Approach Slabs  
and Deck.
8. ELEVATIONS  
Elevations are based on Elev. 0.00 at Mean Sea Level.

ESTIMATED QUANTITIES			
ITEM	DESCRIPTION	UNIT	QUANTITY
204-14	Structural Earth Excavation, Piers	C.Y.	38.0
202-7	Gravel Base Course, In Place Measurement	C.Y.	250
207-8	Reinforced Portland Cement Concrete Approach Slabs.	S.Y.	58
404-28	Bifuminous Concrete Surface Course, Type A	Ton	85
701-38	Portland Cement Concrete, Abutments and Retaining Walls	C.Y.	200
701-37	Portland Cement Concrete, Substructure Columns, Column Bases, Bents, Collision Walls, Girders, Struts, Etc.	C.Y.	190
701-40	Portland Cement Concrete, Roadway and Sidewalk Slabs on Steel Bridges.	C.Y.	250
701-47	Portland Cement	Bbl.	960
701-50	Wrought Iron Scuppers	Each	8
702-103	Structural Steel, Fabricated and Delivered	Lbs.	178,000
702-104	Structural Steel, Erection	Lbs.	178,000
705-15	Reinforcing Steel, Delivered	Lbs.	90,000
705-14	Reinforcing Steel, Placing	Lbs.	90,000
708-16	Steel H Beam Piles 42 Lbs./Ft	Lin. Ft.	* 8,400
709-6	Membrane Waterproofing	S.Y.	7
710-6	Waterproofing Joints	Lin. Ft.	29
804-6	French Drains	C.Y.	56
806-7	Aluminum Rail, Delivered and Erected	Lin. Ft.	515
907-12	Slope Paving for Bridge	S.Y.	447
927-6	Electrical Conduit - 3"	L.F.	265

\*Includes 294 L.F. allowance for Pile Caps and  
100 L.F. allowance for Pile Splices.

AS BUILT - NO REVISION

STATE HIGHWAY COMMISSION  
AUGUSTA, MAINE

PORTLAND-YARMOUTH INTERSTATE

DEPOT ROAD RELOCATED OVER INTERSTATE

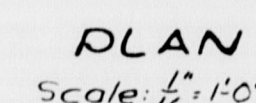
## GENERAL PLAN AND ELEVATION

SHEET NO. 22 OF 50	SCALE: AS NOTED
--------------------	-----------------

M-1301      FAY, SPOFFORD & THORNDIKE,  
ENGINEERS      BOSTON, MASS.

M-1301      FAY, SPOFFORD & THORNDIKE,  
ENGINEERS      BOSTON, MA

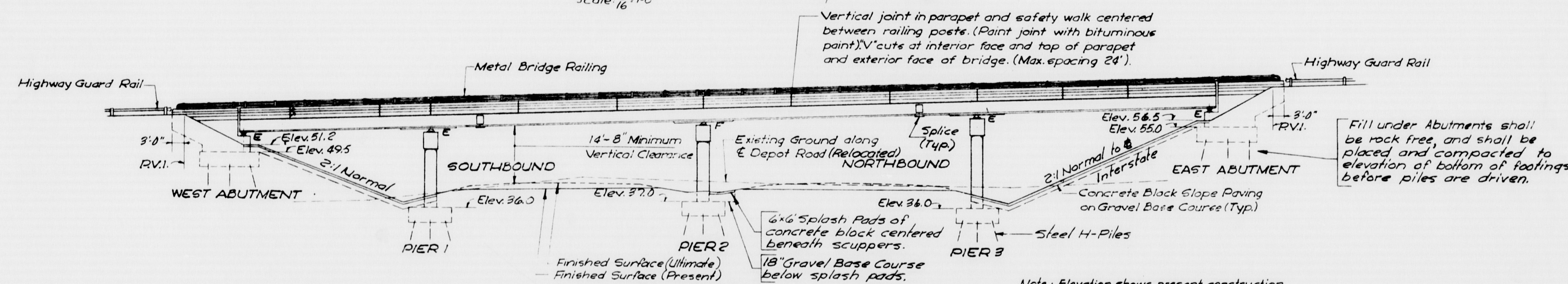
M-1301      FAY, SPOFFORD & THORNDIKE,  
ENGINEERS      BOSTON, MA



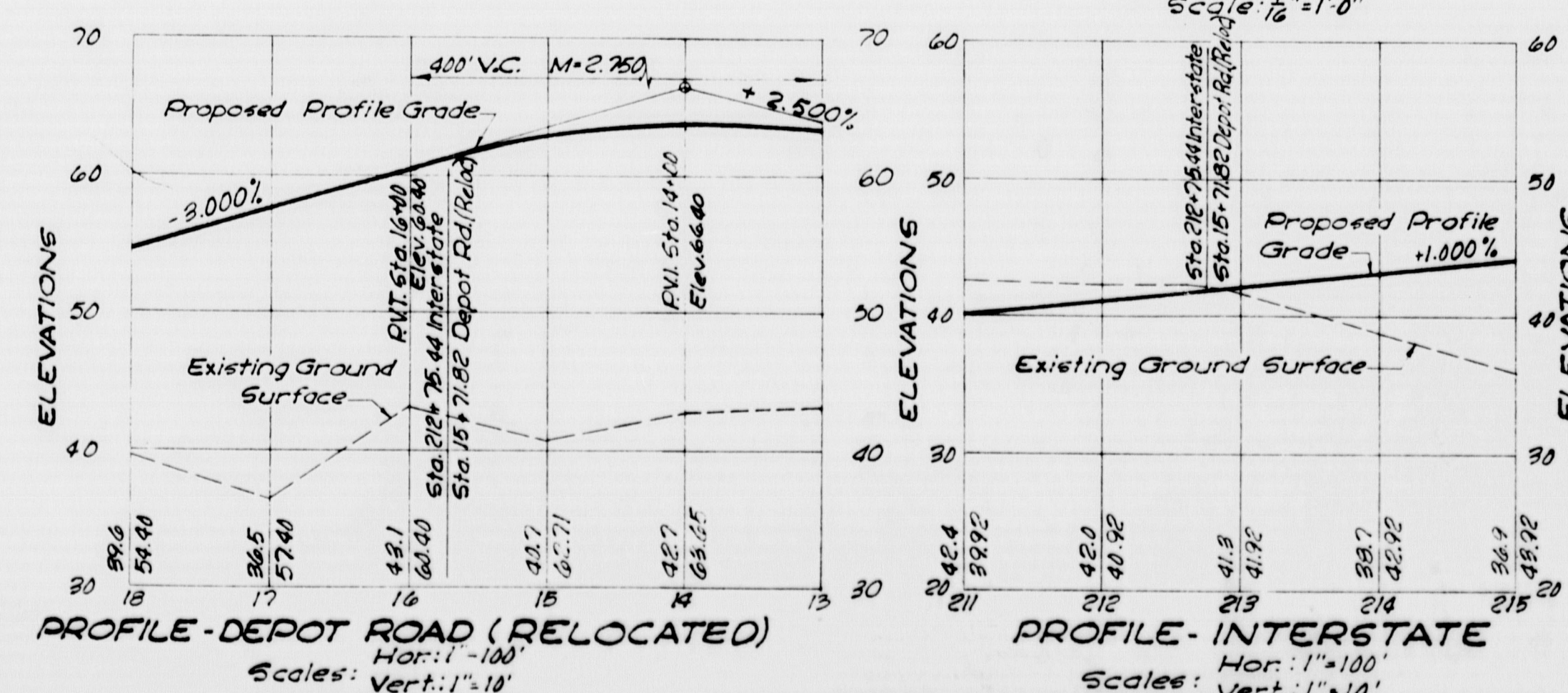
Scale:  $\frac{1}{4}$ " = 1'-0"

Note: Abutments and Piers are parallel to  
 & Portland-Yarmouth Interstate.  
 Wingwalls are parallel to & Depot Rd.  
 Grading shown in plan for ultimate  
 construction. Grading of Interstate  
 above the six inch crushed gravel base  
 course not in this contract.

Vertical joint in parapet and safety walk centered between railing posts. (Paint joint with bituminous paint). "V" cuts at interior face and top of parapet and exterior face of bridge. (Max. spacing 24').



Note : Elevation shows present construction



Limit of Conc. Block Paving

4"

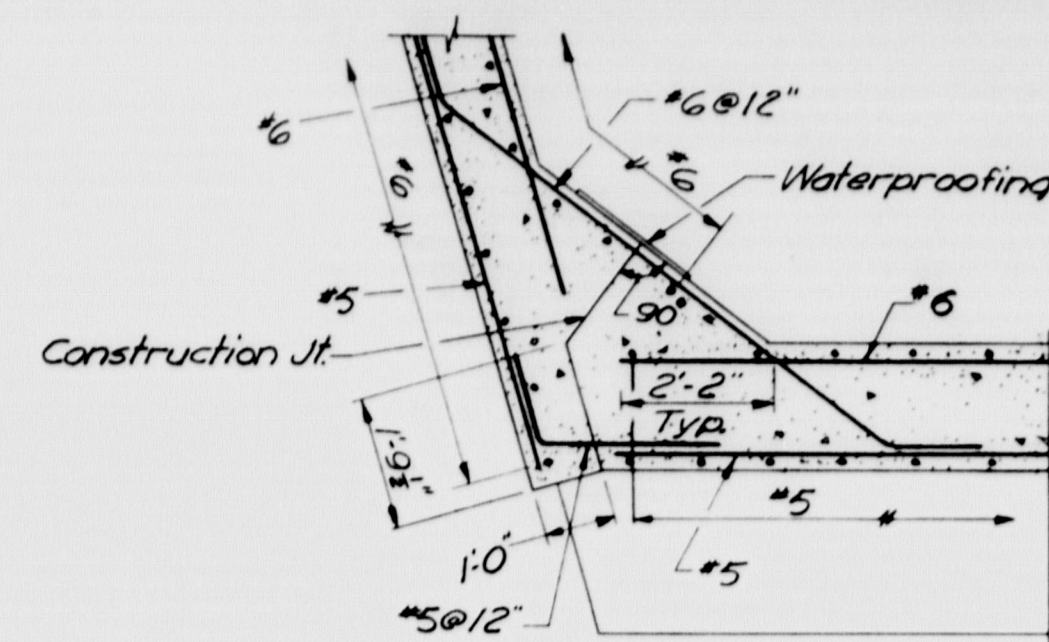
18" Gravel Base Course

DETAIL "A"

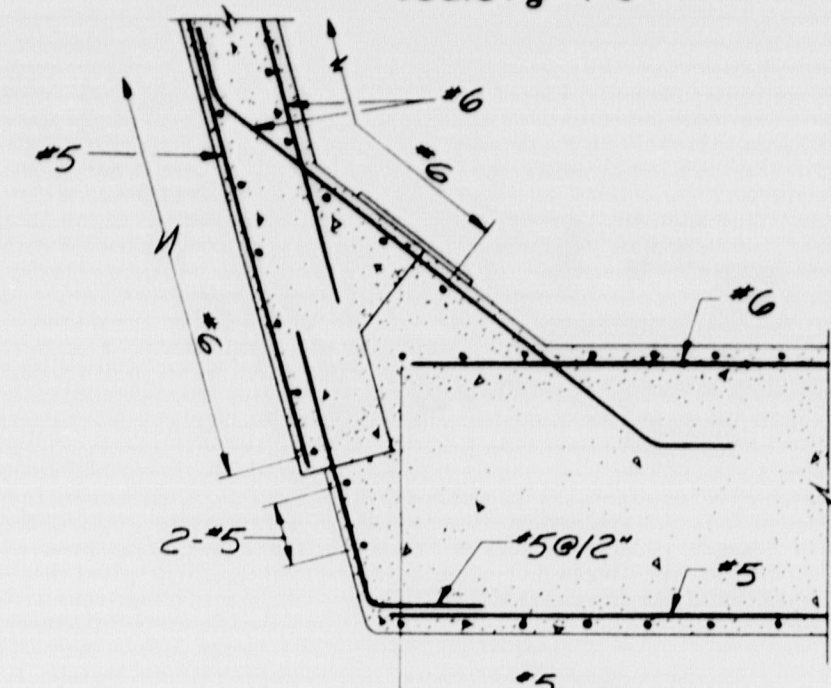


# FALMOUTH

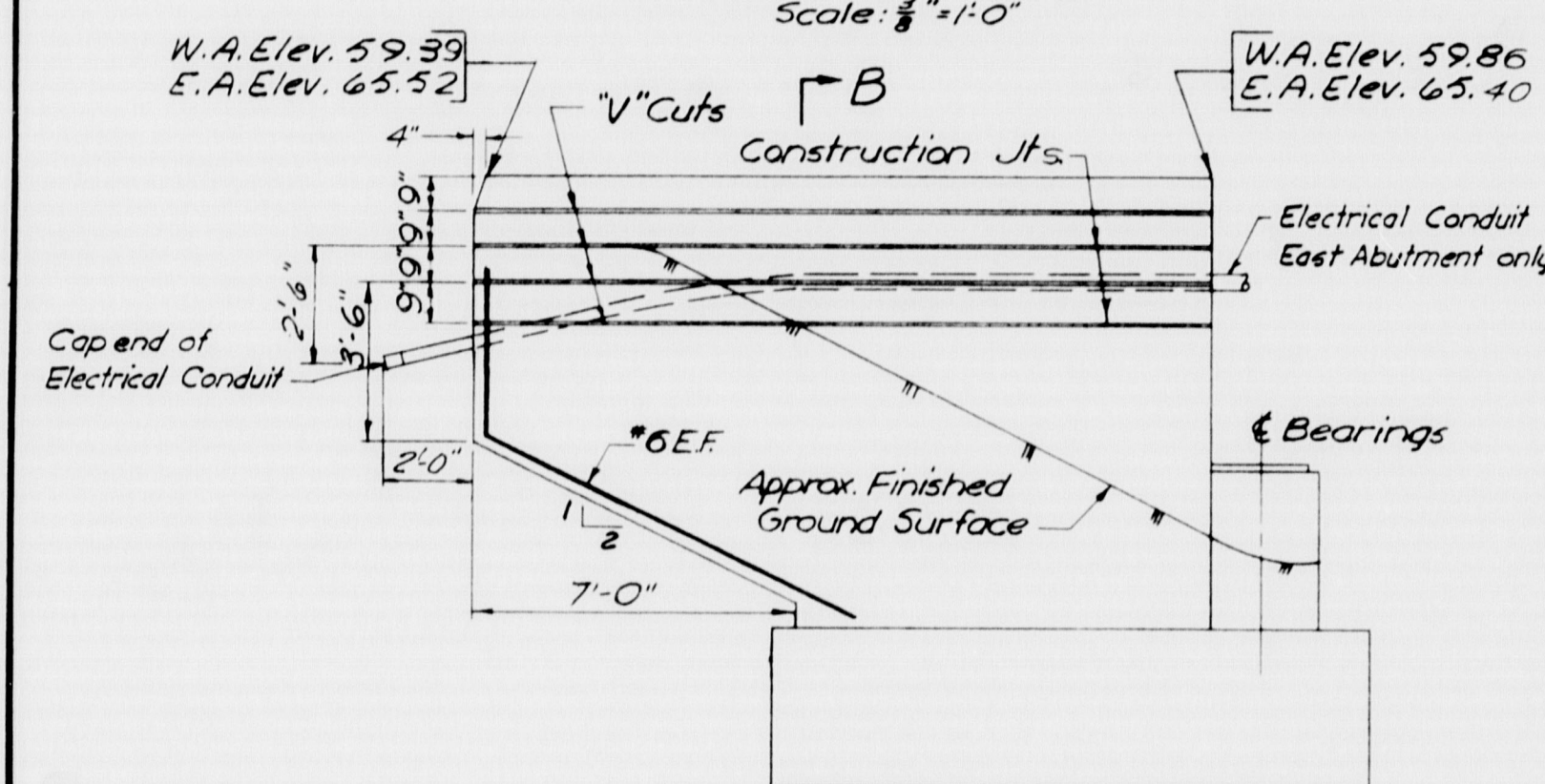
BEARING PAD ELEVATIONS		
STRINGER	WEST ABUTMENT	EAST ABUTMENT
A	53.65	58.78
B	53.70	58.92
C	53.77	59.04
D	53.55	58.87
E	53.35	58.68



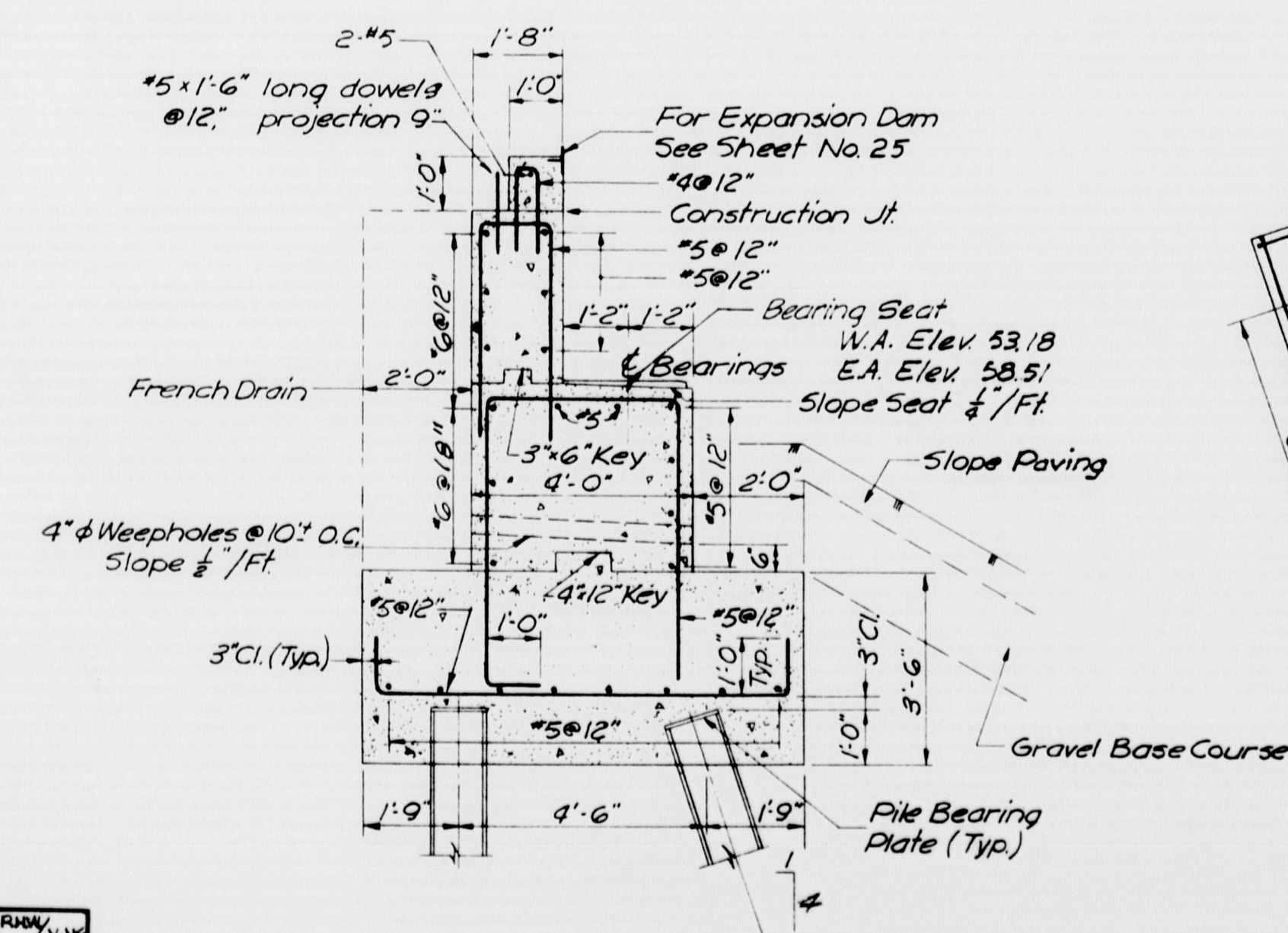
SECTION C-C  
Scale: 1/4" = 1'-0"



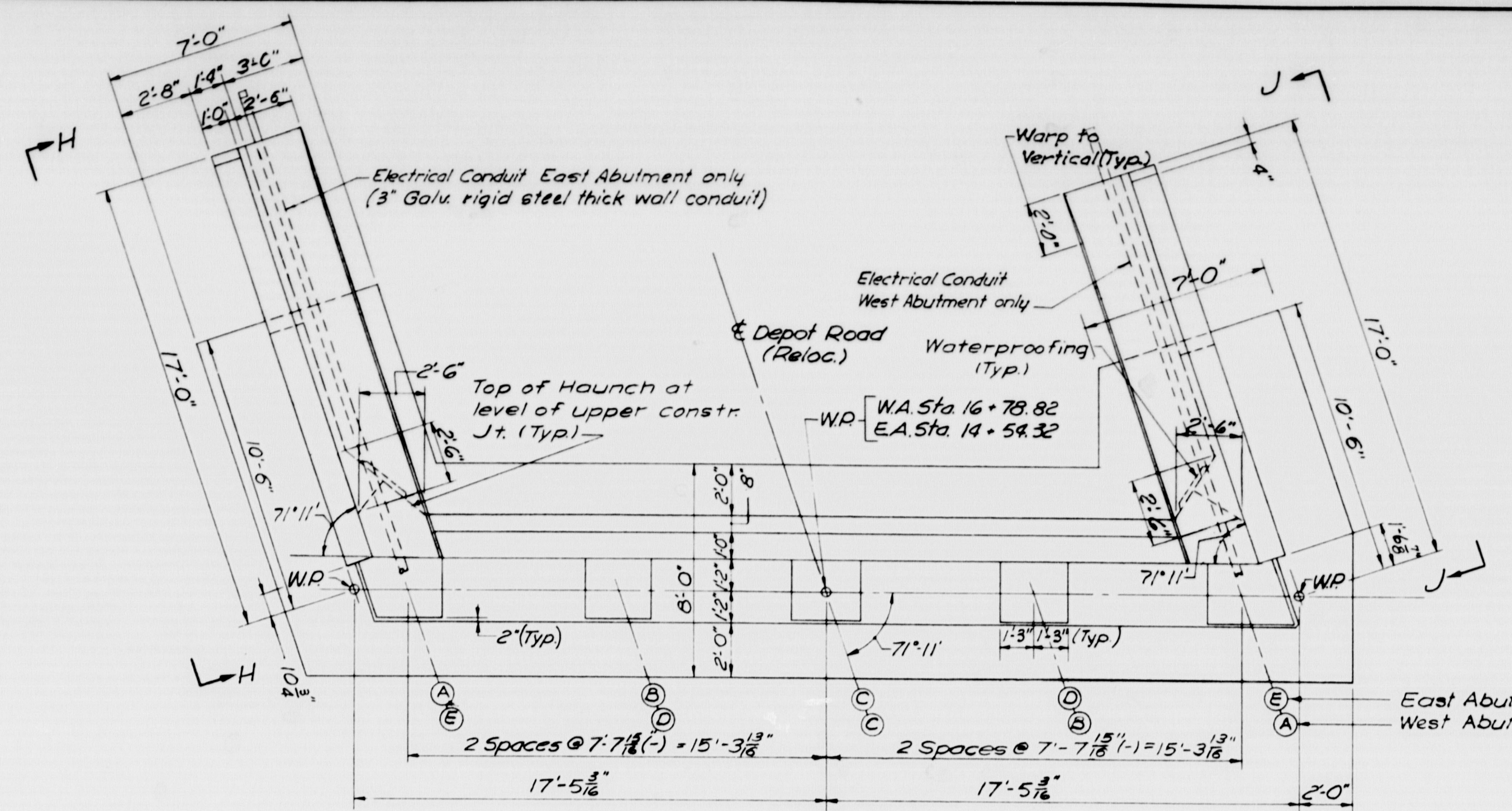
SECTION D-D  
Scale: 1/4" = 1'-0"



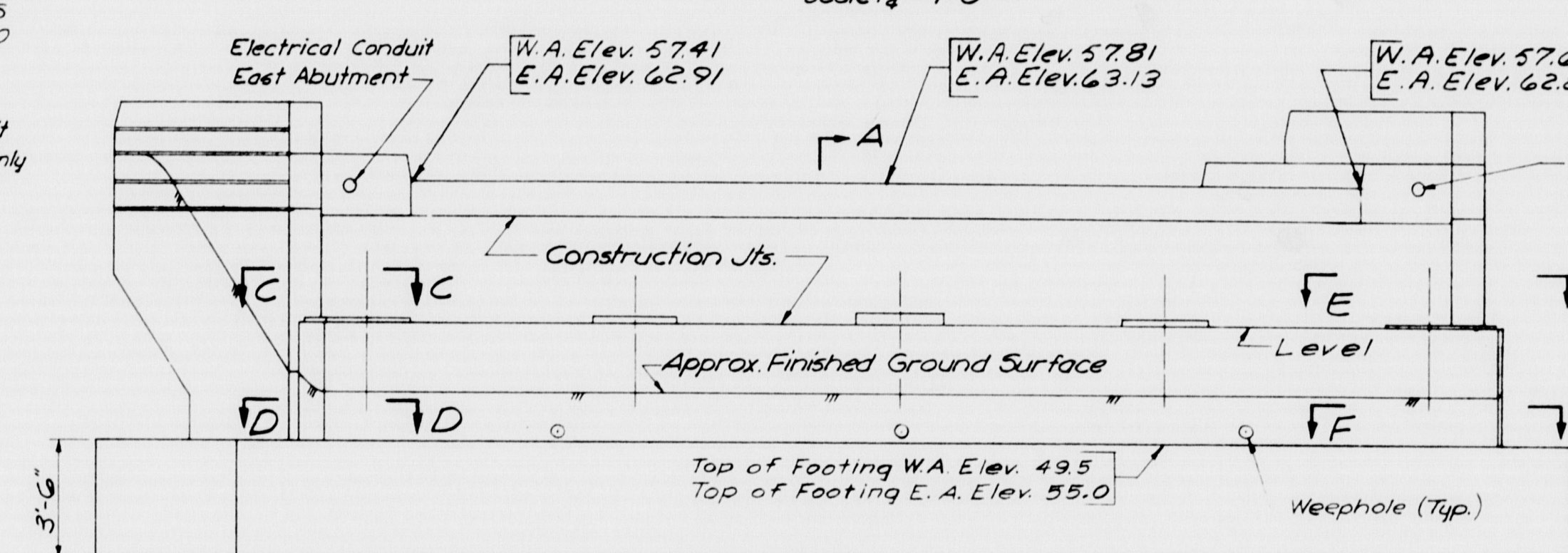
ELEVATION H-H  
Scale: 1/4" = 1'-0"



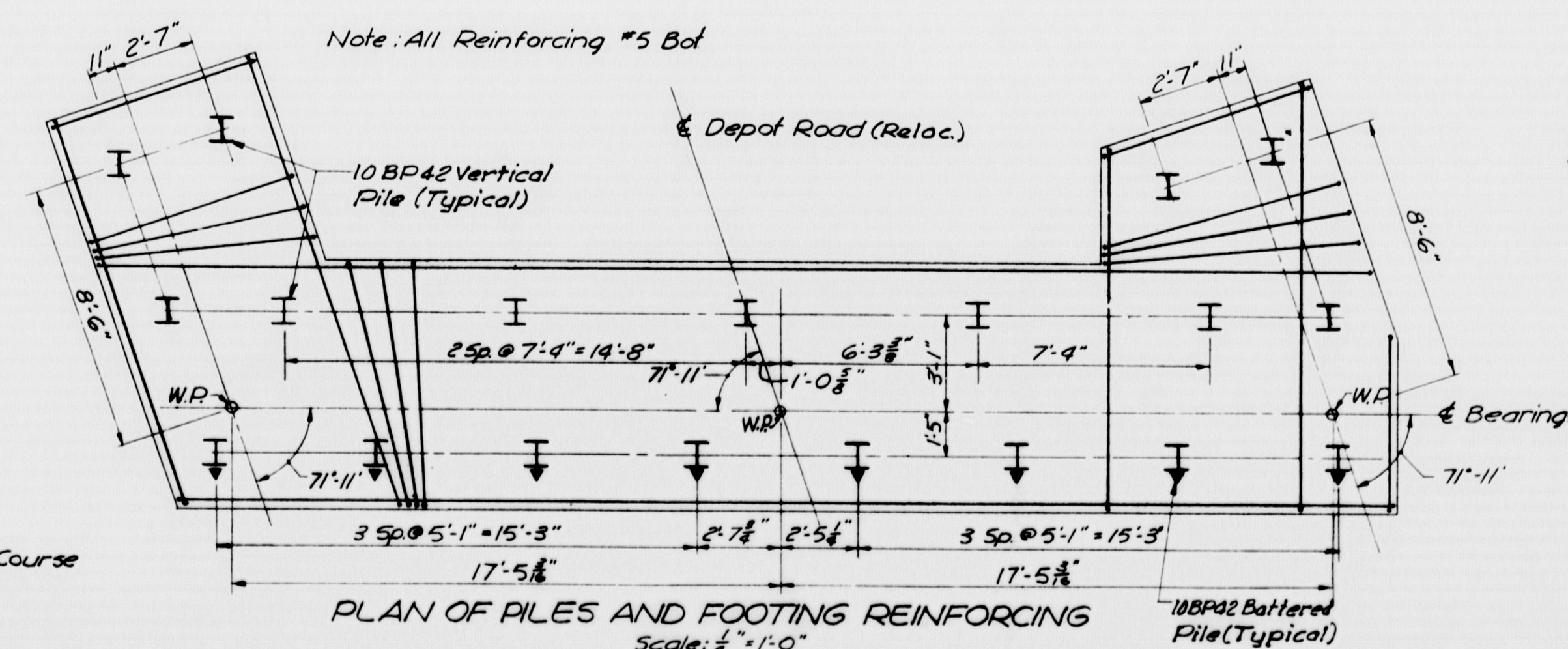
SECTION A-A  
Scale: 1/4" = 1'-0"



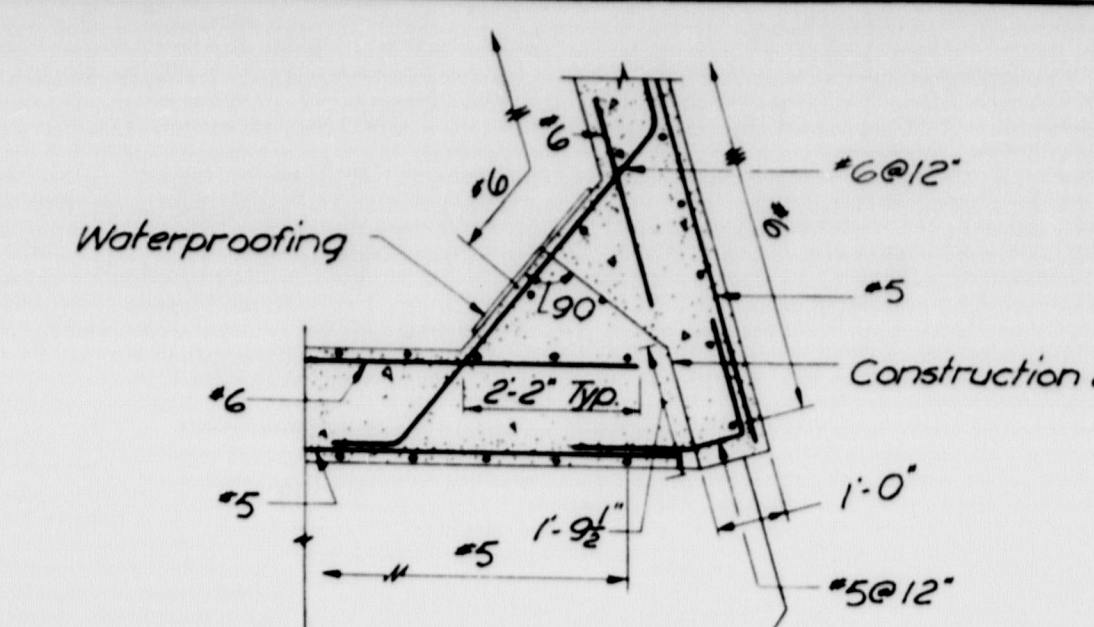
PLAN  
Scale: 1/4" = 1'-0"



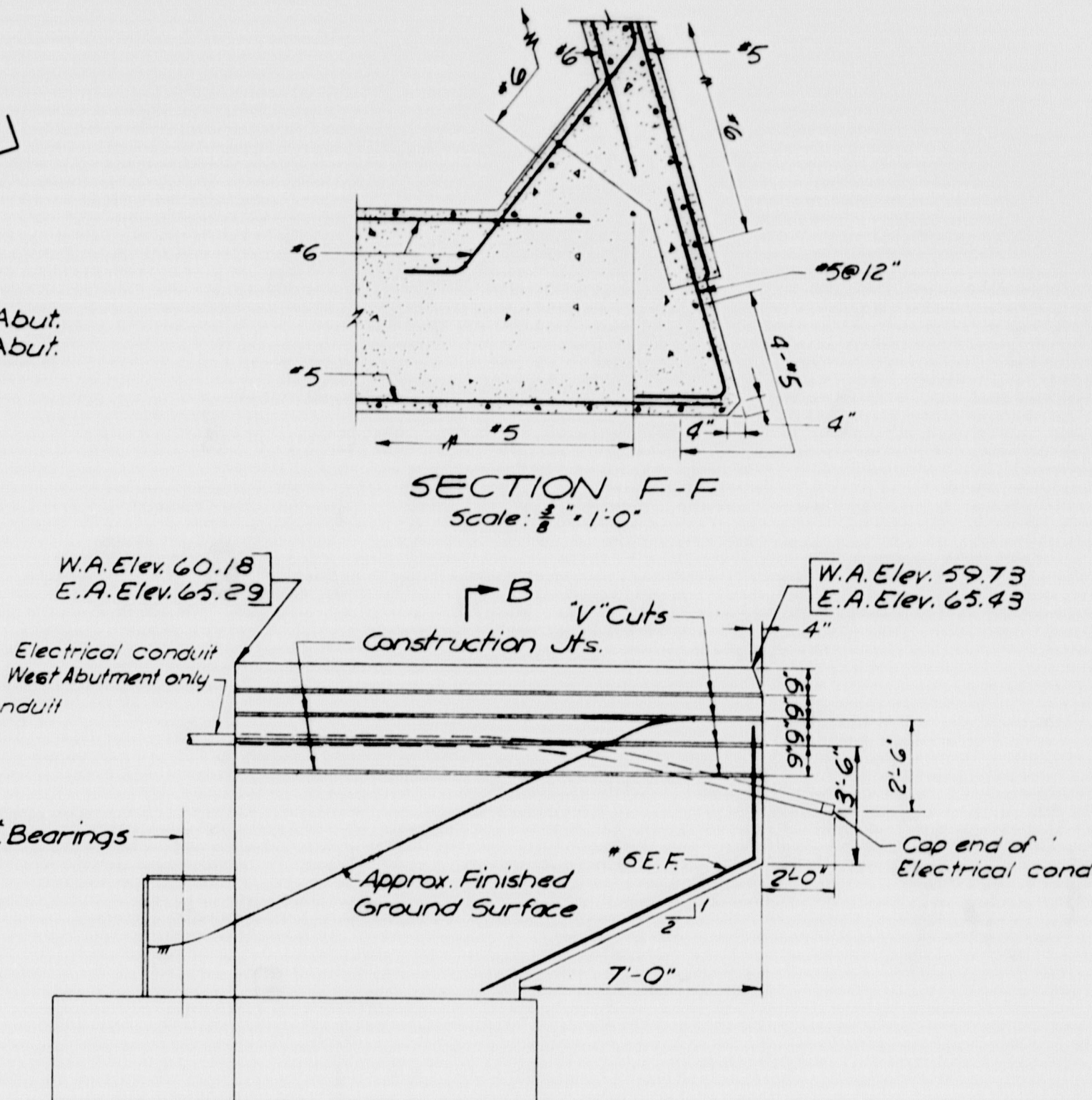
ELEVATION A-A  
Scale: 1/4" = 1'-0"



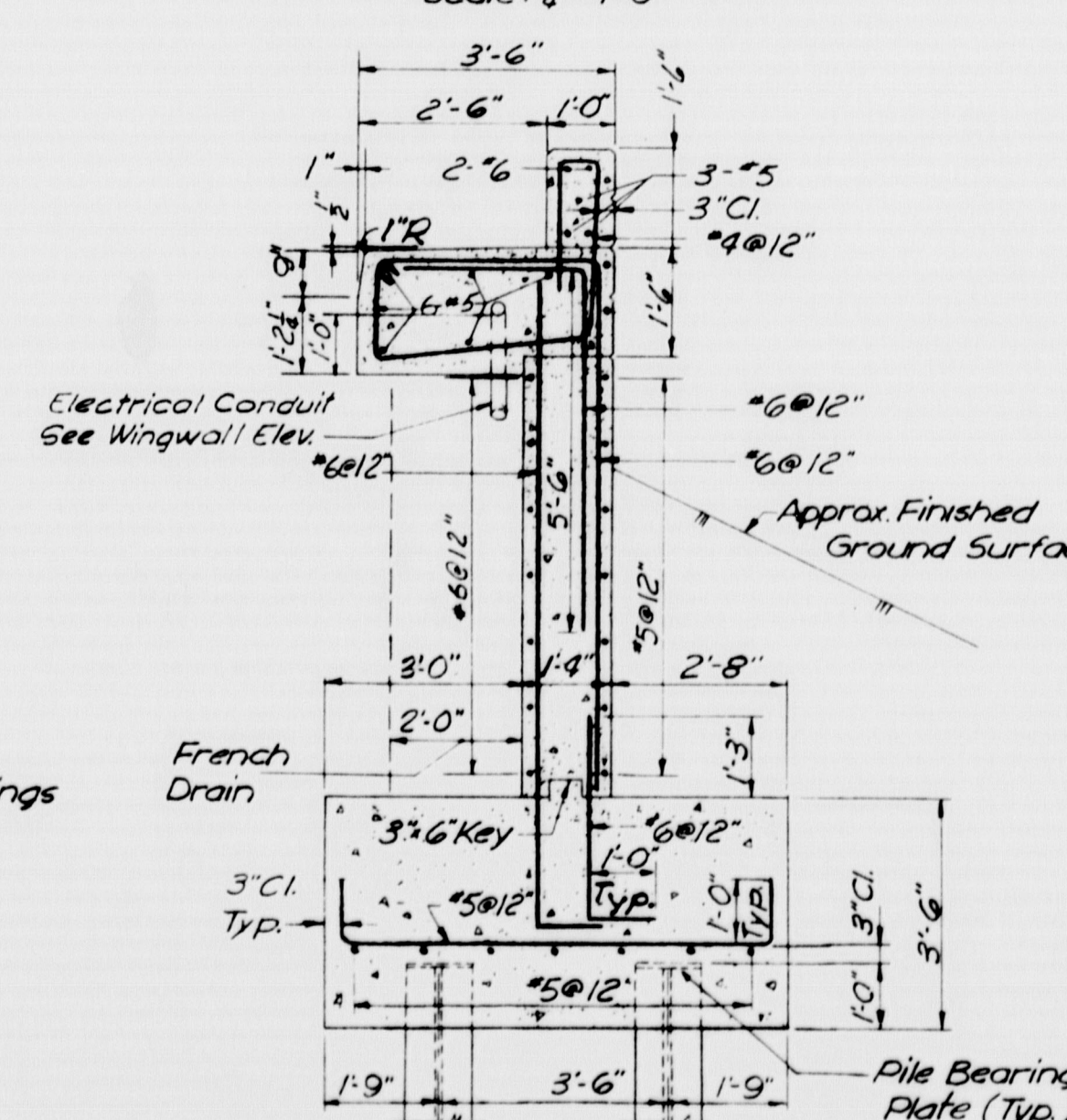
PLAN OF PILES AND FOOTING REINFORCING  
Scale: 1/4" = 1'-0"



SECTION E-E  
Scale: 1/4" = 1'-0"



ELEVATION J-J  
Scale: 1/4" = 1'-0"



SECTION B-B  
Scale: 1/4" = 1'-0"

NOTES  
For typical details see Sheet No. 24  
For construction notes see Sheet No. 24

LEGEND  
W.A. - West Abutment  
E.A. - East Abutment  
W.P. - Working Point  
E.F. - Each Face

AS BUILT - NO REVISION

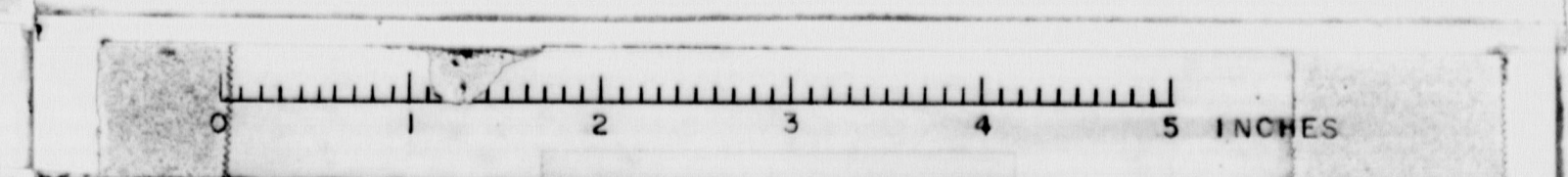
STATE HIGHWAY COMMISSION  
AUGUSTA, MAINE

PORTLAND-YARMOUTH INTERSTATE

DEPOT ROAD RELOCATED OVER INTERSTATE

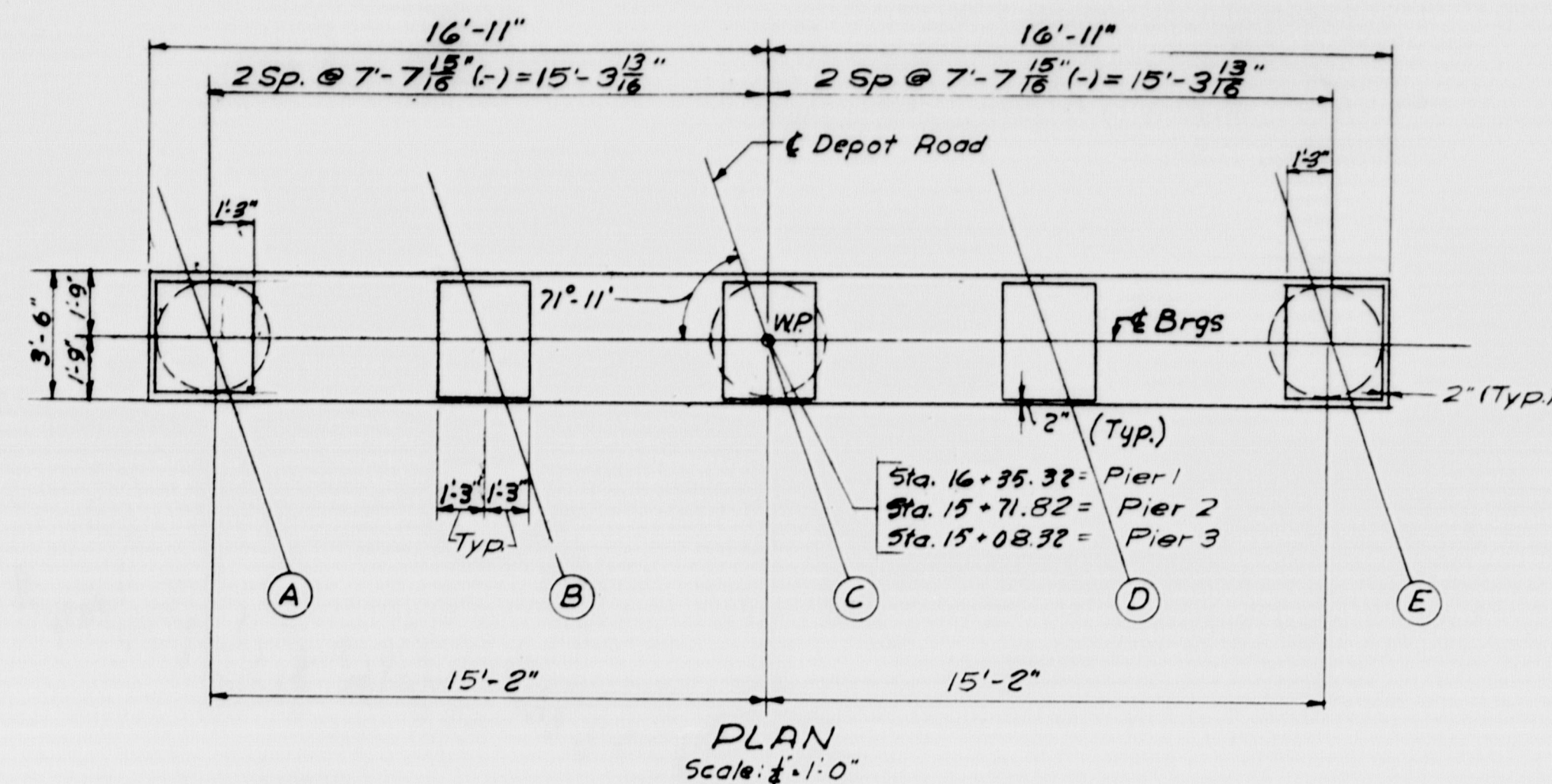
ABUTMENT DETAILS

SHEET NO. 23 OF 50 SCALE: AS NOTED  
M-1302 FAY, SPOFFORD & THORNDIKE, INC. BOSTON, MASS. 02-14 366

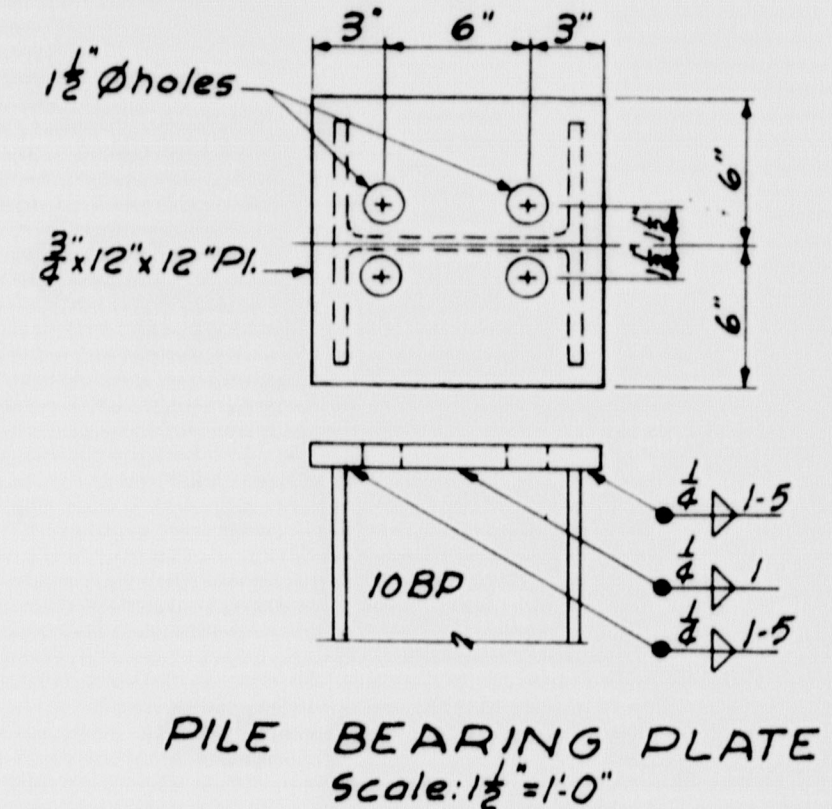
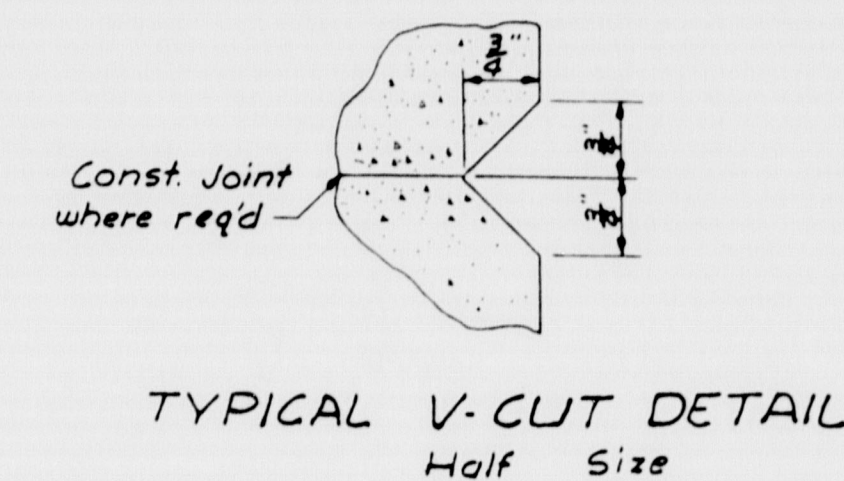
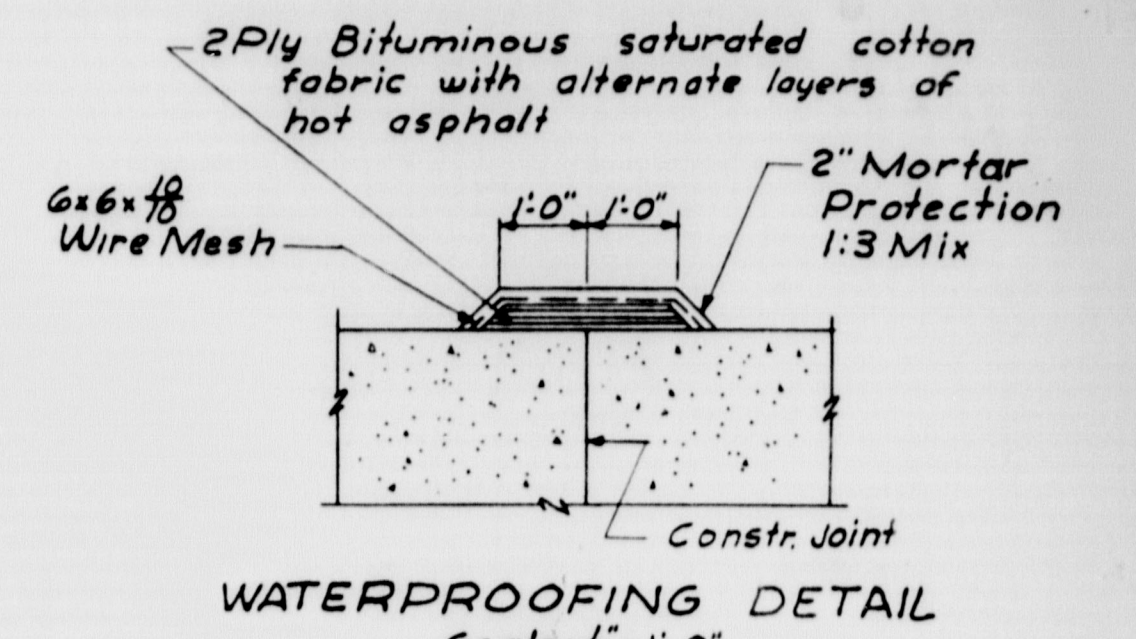
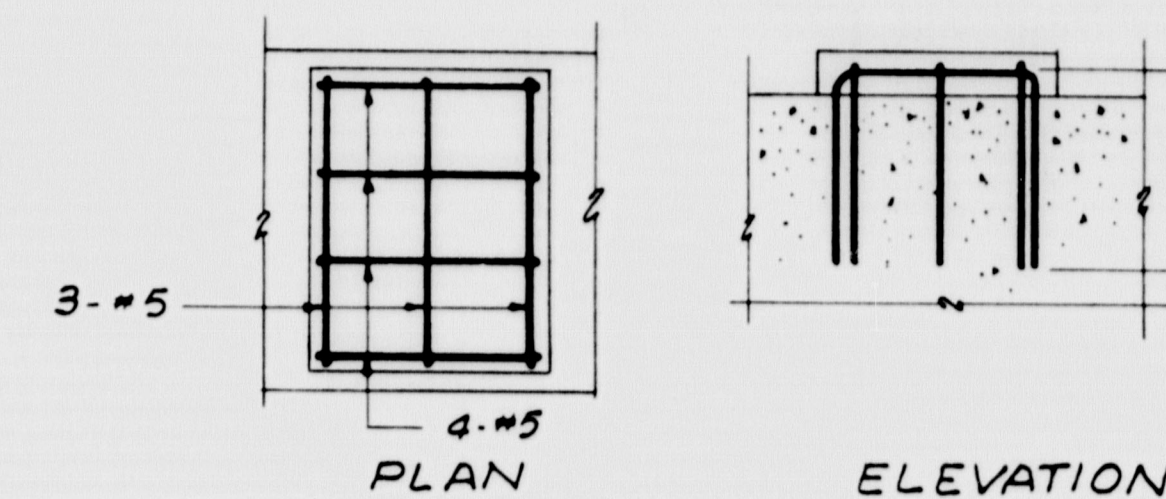




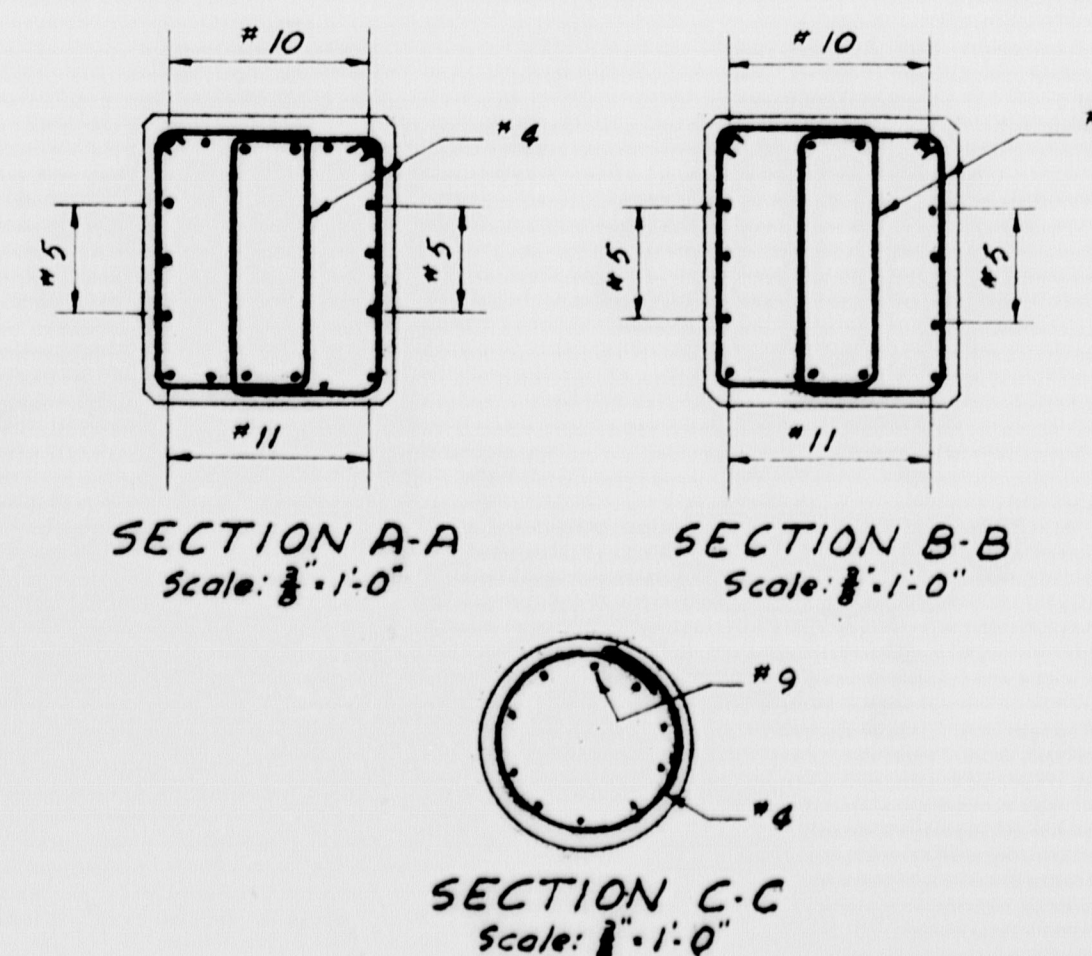
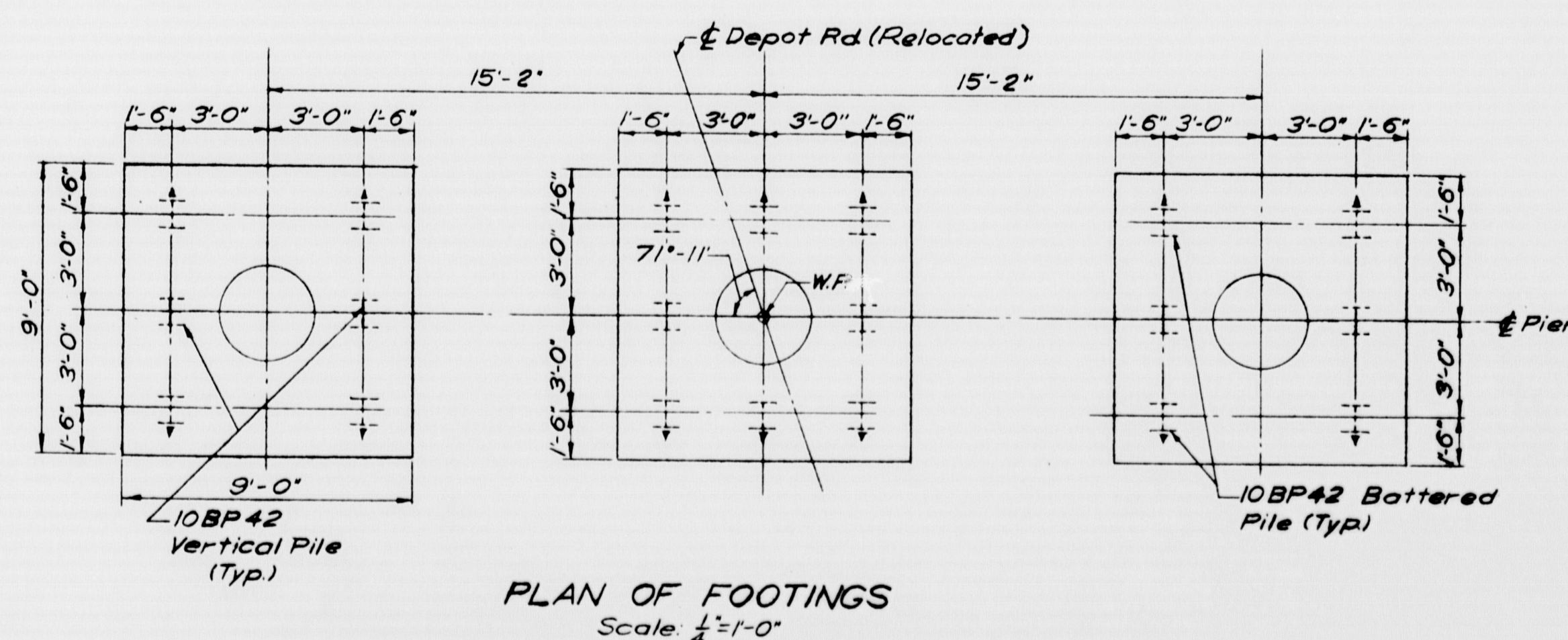
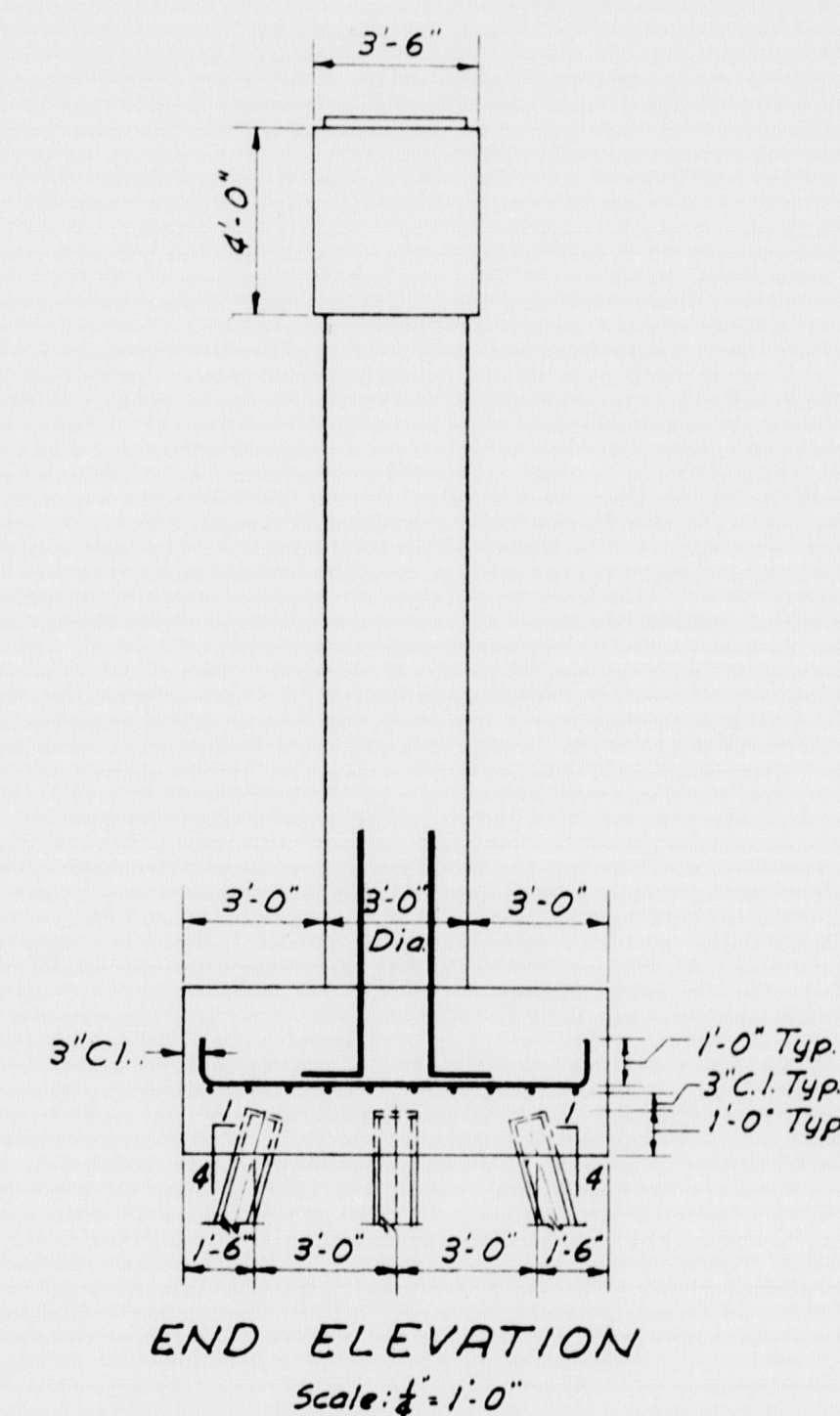
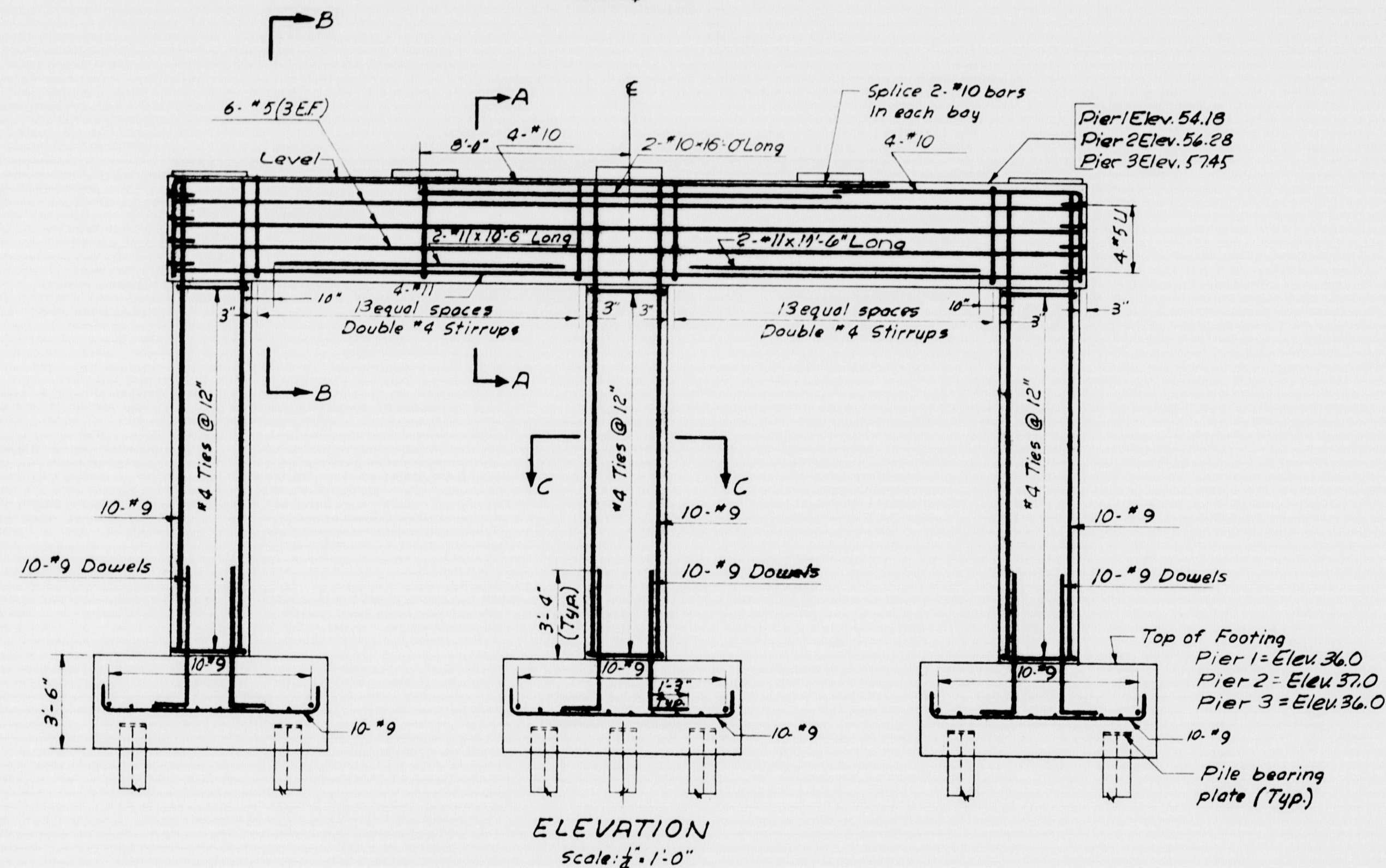
# FALMOUTH



STRINGER	PIER 1	PIER 2	PIER 3
A	54.64	56.70	57.79
B	54.71	56.78	57.90
C	54.79	56.87	58.00
D	54.56	56.65	57.80
E	54.35	56.45	57.62



## TYPICAL DETAILS Scale: As Noted



- Construction Notes
1. Reinforcing steel to have 2" min. concrete cover unless otherwise noted.
  2. All bar splices to lap 20 diameters (12" min.) unless otherwise noted.
  3. All bar embedments to be 35 diameters unless otherwise noted.
  4. Bearing pads to be of sufficient height to permit bush hammering to the proper elevation.
  5. All bearing pads to be placed integrally with the piers and abutments.
  6. All exposed corners except on bearing pads to have a 3/8" chamfer. Bearing pads to have tooled edges.
  7. Reinforcing steel in or beneath bearing pads to be positioned to clear swedge anchor bolts. For swedge anchor bolts see bearing types on Sh. No. 28

AS BUILT - NO REVISION

STATE HIGHWAY COMMISSION  
AUGUSTA, MAINE

PORTLAND-YARMOUTH INTERSTATE

DEPOT ROAD RELOCATED OVER INTERSTATE

## PIER DETAILS

SHEET NO. 24 OF 50 SCALE: AS NOTED

M-1303 FAY, SPOFFORD & THORNDIKE, INC. BOSTON, MASS. Qm-14 367

DES. R.R.K.  
DR. DAM  
TR.  
CHK. R.P.  
APPR.

Revised Sheet Price 368-4-47

